

## 1.1. SPECIFICATIONS

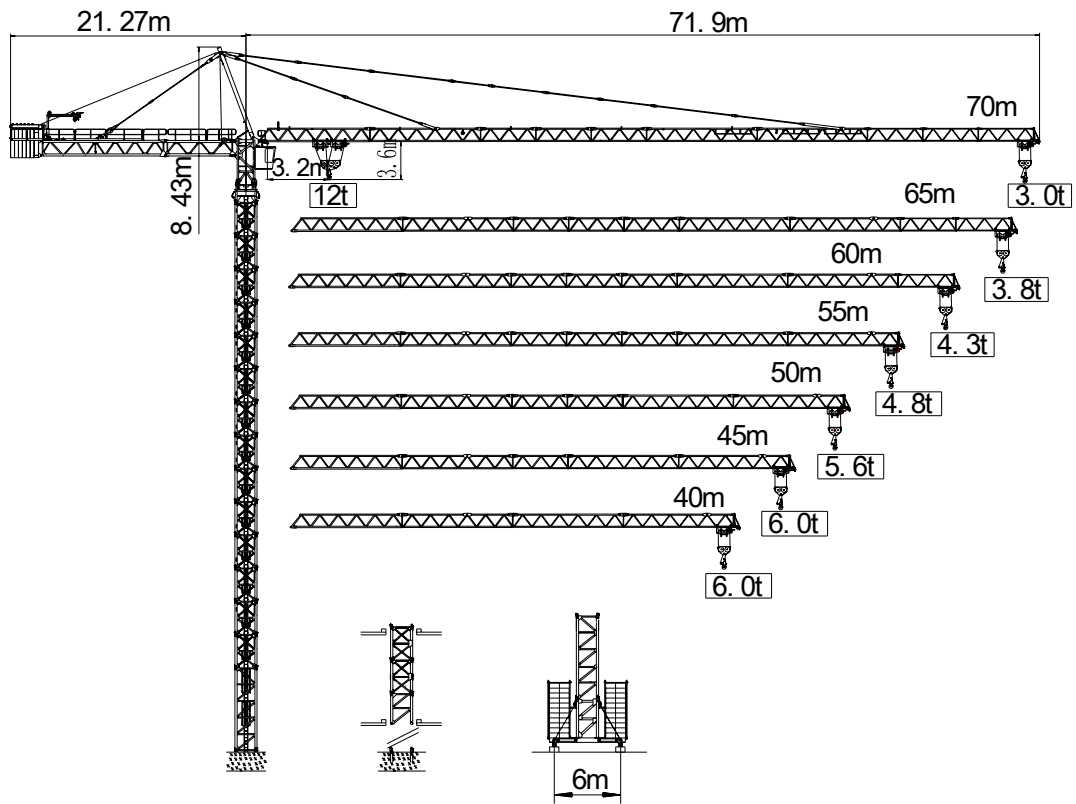


Fig.1-1-1

Table 1-1-1

<b>R</b>	<b>Fall</b>	<b>R(max) m</b>	<b>C(max) t</b>	<b>25</b>	<b>30</b>	<b>35</b>	<b>40</b>	<b>45</b>	<b>50</b>	<b>55</b>	<b>60</b>	<b>65</b>	<b>70</b>
<b>70</b>	IV	3.2-21.07	12.0	9.7	7.7	6.6	5.25	4.4	3.8	3.3	2.8	2.5	2.25
	II	4.1-40.30	6.0	6.0	6.0	6.0	6.0	5.2	4.6	4.1	3.6	3.3	3.0
<b>65</b>	IV	3.2-23.35	12.0	11.0	8.8	7.2	6.1	5.2	4.5	3.9	3.4	3.0	
	II	4.1-44.83	6.0	6.0	6.0	6.0	6.0	5.9	5.2	4.6	4.2	3.8	
<b>60</b>	IV	3.2-23.76	12.0	11.2	9.0	7.4	6.2	5.3	4.6	4.0	3.5		
	II	4.1-45.64	6.0	6.0	6.0	6.0	6.0	6.0	5.3	4.7	4.36		
<b>55</b>	IV	3.2-23.80	12.0	11.3	9.0	7.4	6.2	5.3	4.6	4.0			
	II	4.1-45.72	6.0	6.0	6.0	6.0	6.0	6.0	5.3	4.8			
<b>50</b>	IV	3.2-24.53	12.0	11.7	9.4	7.7	6.5	5.5	4.8				
	II	4.1-47.19	6.0	6.0	6.0	6.0	6.0	6.0	5.6				
<b>45</b>	IV	3.2-24.87	12.0	11.9	9.5	7.8	6.6	5.7					
	II	4.1-45.00	6.0	6.0	6.0	6.0	6.0	6.0					
<b>40</b>	IV	3.2-25.20	12.0	12.	9.7	8.0	6.8						
	II	4.1-40.00	6.0	6.0	6.0	6.0	6.0						

IV: Dual trolley

II: Single Trolley

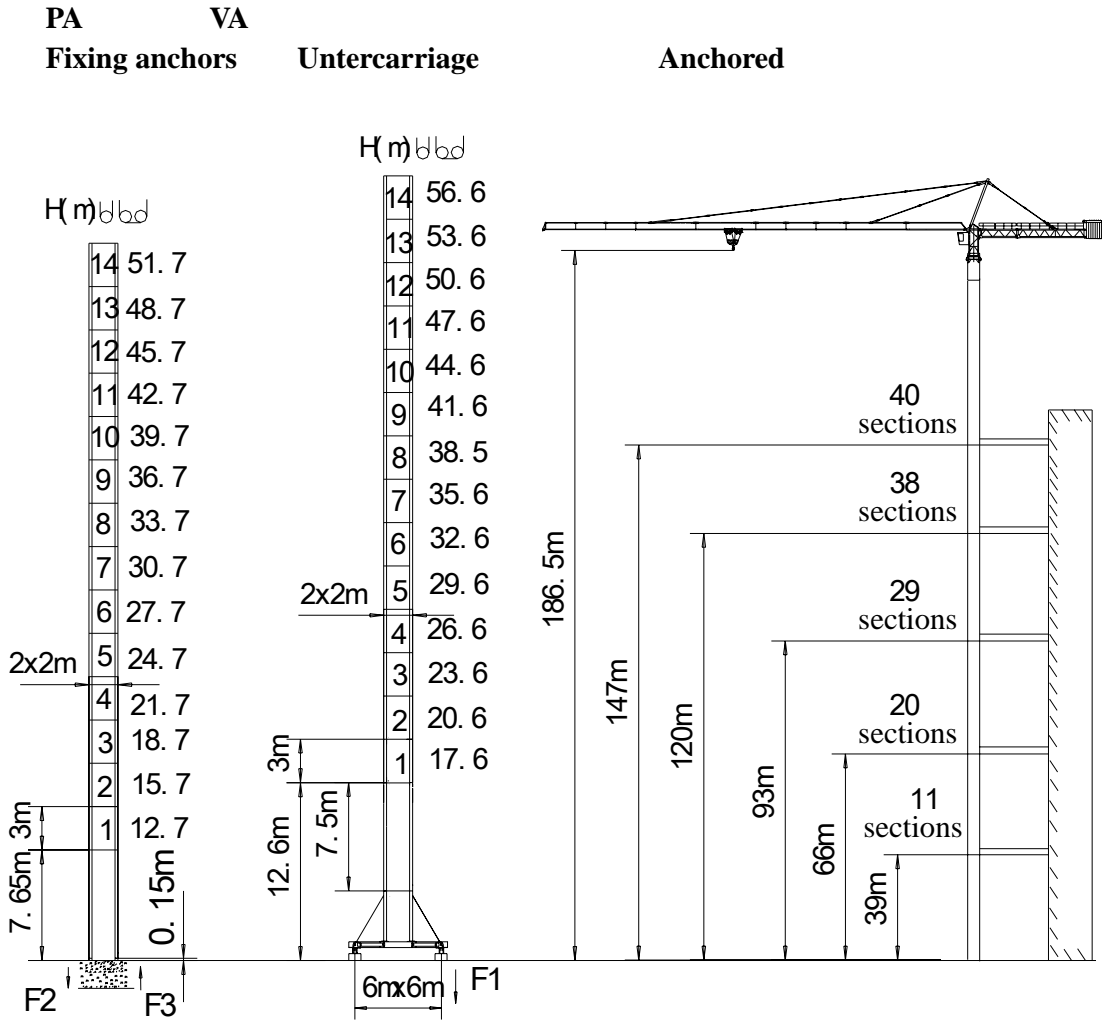


Fig.1-1-2

Table 1-1-2

F2	○144t	□124t	3x380V ( ± 5%) 50HZ Needed electrical force 105 kVA
F3	○ 99t	□ 78t	
	82t		
F1	○91t	□ 95t	
	93t		

○ : In service

□ : Out of service

: Crane weight without load or ballast with longest jib and at maximum height.