



עגורנים בע"מ **י.ב.ג.י.ר**

**STT113**

# 1.1. SPECIFICATIONS

6t

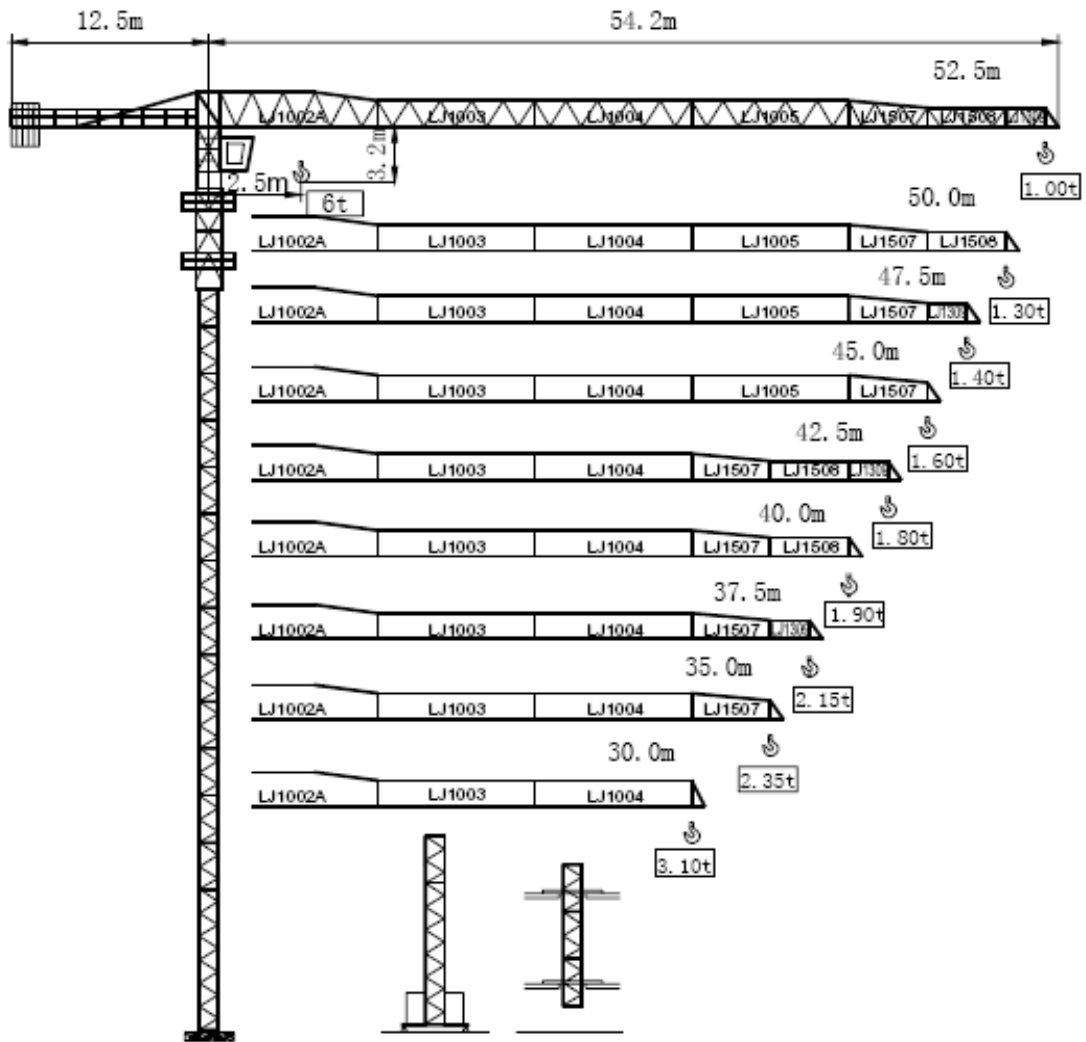


Table 1-1-1a

R	Reeving method	R(max) m	C(max) t	20	25.0	30.0	35.0	37.5	40.0	42.5	45.0	47.5	50.0	52.5
52.5	IV	12.76	6.00	3.52	2.67	2.12	1.73	1.57	1.43	1.31	1.21	1.11	1.03	<b>0.95</b>
	II	23.05	3.00	3.00	2.72	2.16	1.77	1.62	1.48	1.36	1.26	1.16	1.08	<b>1.00</b>
50.0	IV	14.43	6.00	4.09	3.13	2.49	2.05	1.87	1.71	1.58	1.46	1.35	<b>1.25</b>	
	II	26.18	3.00	3.00	3.00	2.54	2.09	1.92	1.76	1.63	1.50	1.40	<b>1.30</b>	
47.5	IV	14.45	6.00	4.10	3.13	2.50	2.05	1.87	1.72	1.58	1.46	<b>1.35</b>		
	II	26.22	3.00	3.00	3.00	2.55	2.10	1.92	1.77	1.63	1.51	<b>1.40</b>		
45.0	IV	15.06	6.00	4.31	3.30	2.64	2.17	1.98	1.82	1.68	<b>1.55</b>			
	II	27.38	3.00	3.00	3.00	2.68	2.22	2.03	1.87	1.73	<b>1.60</b>			
42.5	IV	15.53	6.00	4.47	3.43	2.74	2.26	2.07	1.90	<b>1.75</b>				
	II	28.25	3.00	3.00	3.00	2.79	2.31	2.11	1.95	<b>1.80</b>				
40.0	IV	15.24	6.00	4.37	3.35	2.68	2.20	2.01	<b>1.85</b>					
	II	27.72	3.00	3.00	3.00	2.73	2.25	2.06	<b>1.90</b>					
37.5	IV	15.72	6.00	4.53	3.48	2.79	2.29	<b>2.10</b>						
	II	28.62	3.00	3.00	3.00	2.83	2.34	<b>2.15</b>						
35.0	IV	15.75	6.00	4.54	3.49	2.79	<b>2.30</b>							
	II	28.67	3.00	3.00	3.00	2.84	<b>2.35</b>							
30.0	IV	17.12	6.00	5.01	3.86	<b>3.10</b>								
	II	30.00	3.00	3.00	3.00	<b>3.00</b>								

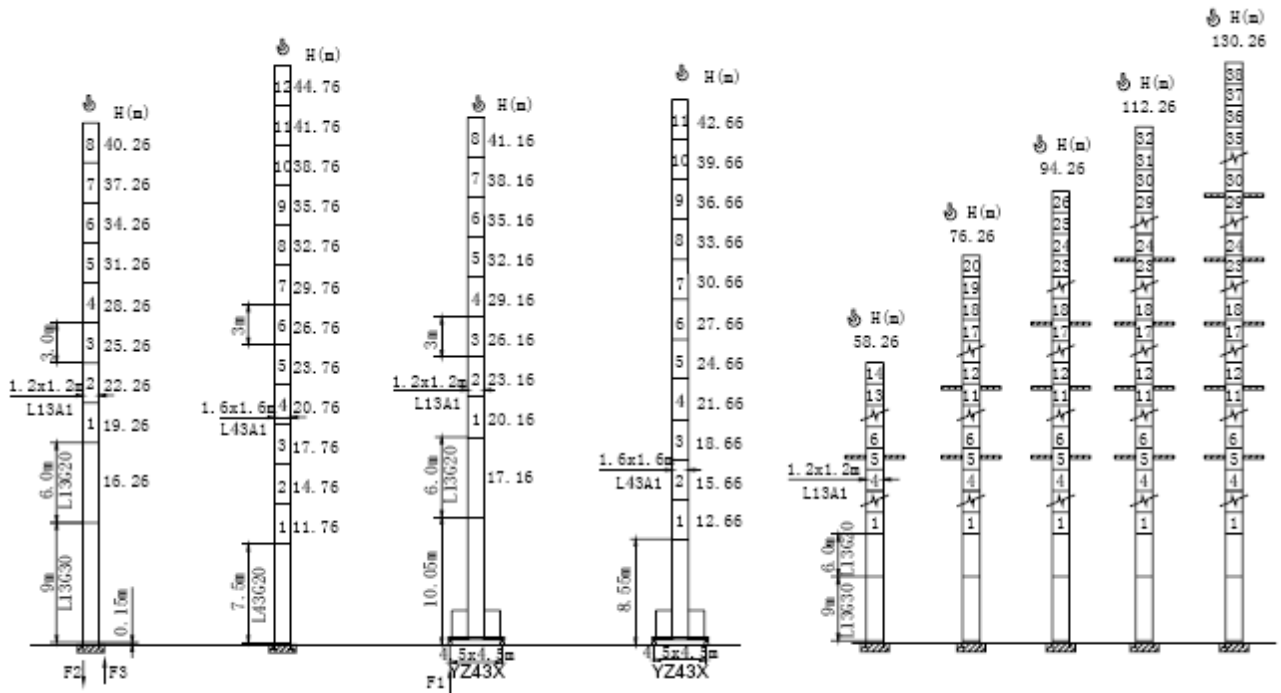


Fig. 1-1-2a


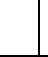
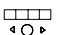
**Table 1-1-2a**

Type	Locked type		Mobile type	
	In service	Not in service	In service	Not in service
<b>F1</b>			65 t	46 t
<b>F2</b>	98 t	112 t		
<b>F3</b>	70 t	135 t		
<b>Nett weight</b>	52 t		64 t	

Crane weight without load or ballast with longest jib and at maximum height.

**Crane mechanism specifications:**

**Table 1-1-3a**

Name	Code	Operating speed / / hoisted weight				Drum	Motor kW
		m/min	t	m/min	t		
<b>Hoisting</b>	24PQC15					400m >400m*	24/24/5.5
		0-8.5	3.0	0-4.2	6.0		
		0-40	3.0	0-20	6.0		
		0-80	1.5	0-40	3.0		
<b>Trolleying</b>	DTC55	0→57 m/min					55 Nm
<b>Slewing</b>	RTC95	0-0.7 rpm					95 Nm
<b>Travelling</b> 	RT	12.5-25 m/min					2x1.7/3.4

\* Please consult us