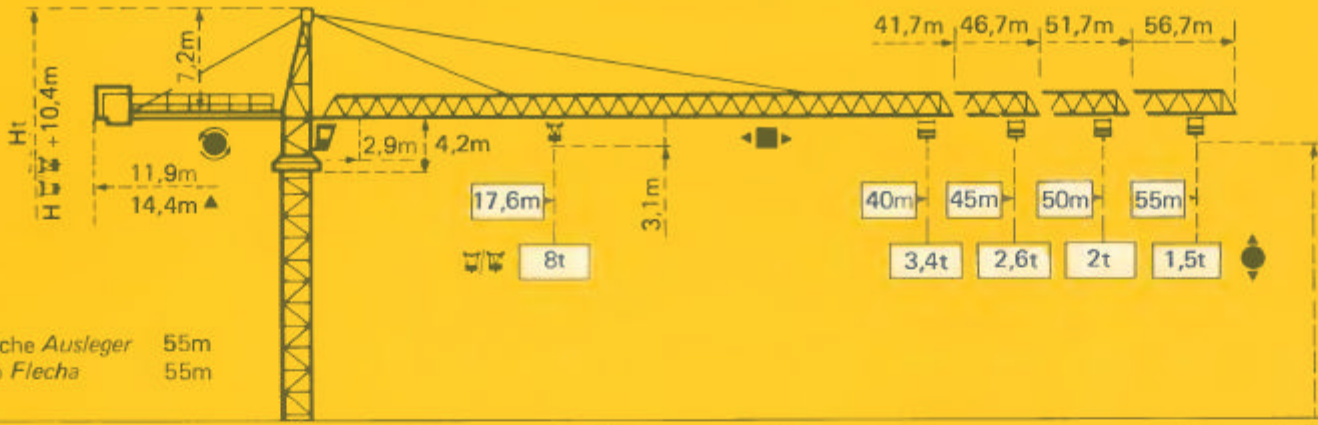




TOPKIT G20/15C

POTAIN 

Cotes Abmessungen Dimensions Dimensiones



▲ Flèche Ausleger 55m
▲ Jib Flecha 55m

Mâtère Mast Mast Mástil
□ 1,6m x 1,6m

Mâtère Mast Mast Mástil
□ 2m x 2m

PA459

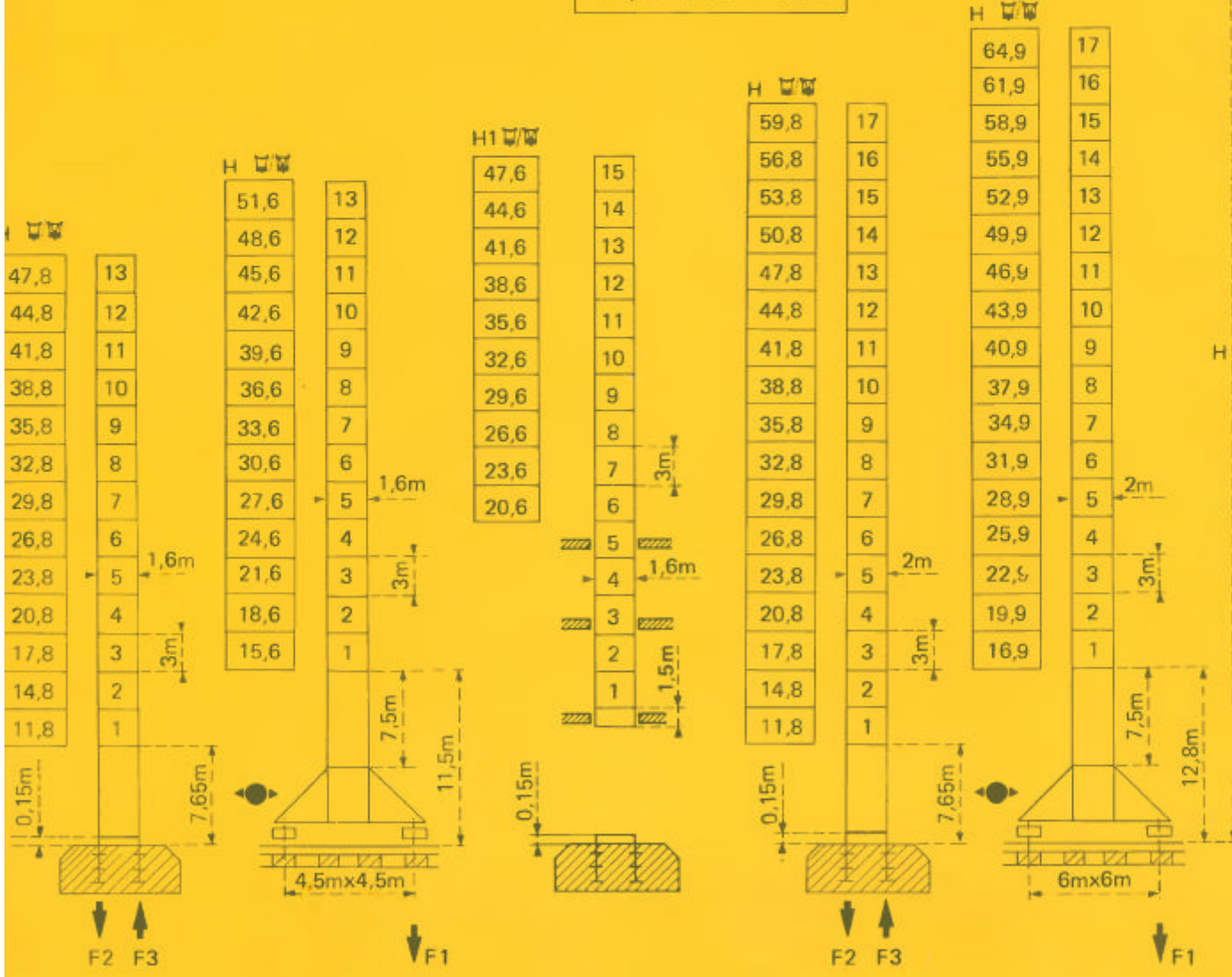
SB459

BA45A

PA663

VB 663

$$H_{\square} = H_{\square/\square} + 0,7m$$



F = Réactions Eckdrücke Reactions Reacciones

F2	● 102t	■ 130t
F3	● 70t	■ 103t
	● 39t	

F1	● 76t	■ 94t
	● 47t	

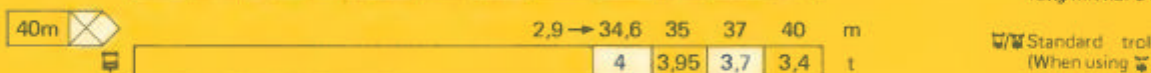
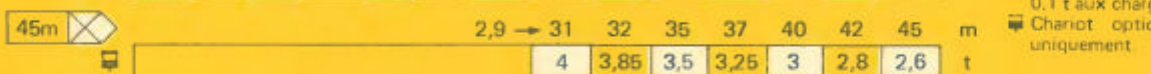
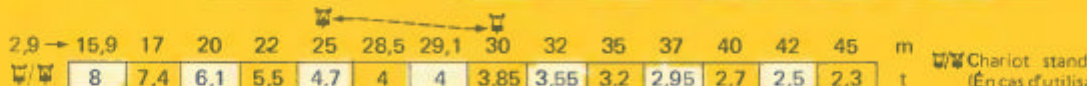
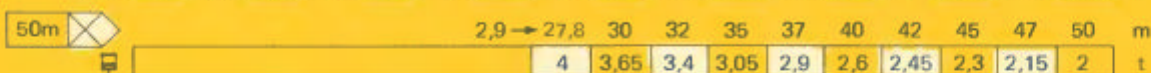
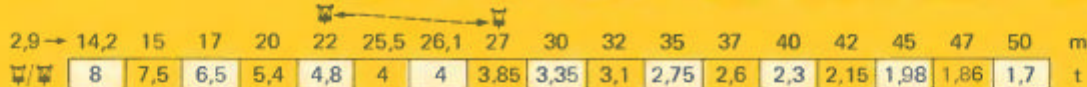
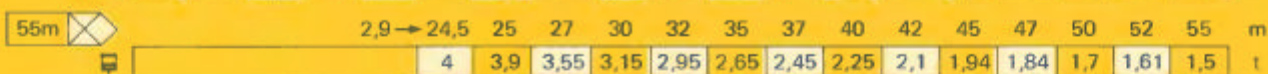
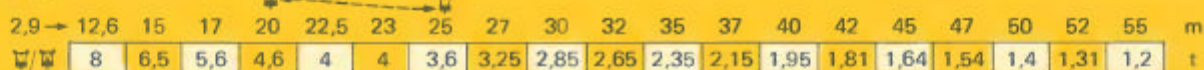
Voir ci-contre
Siehe nebenstehend
See opposite
Ver página opuesta

F2	● 108t	■ 165t
F3	● 44t	■ 132t
	● 49,5t	

F1	● 86t	■ 115t
	● 62,5t	

Courbes de charges Lastkurven Load diagrams Curvas de cargas

Flèche Ausleger Jib Flecha



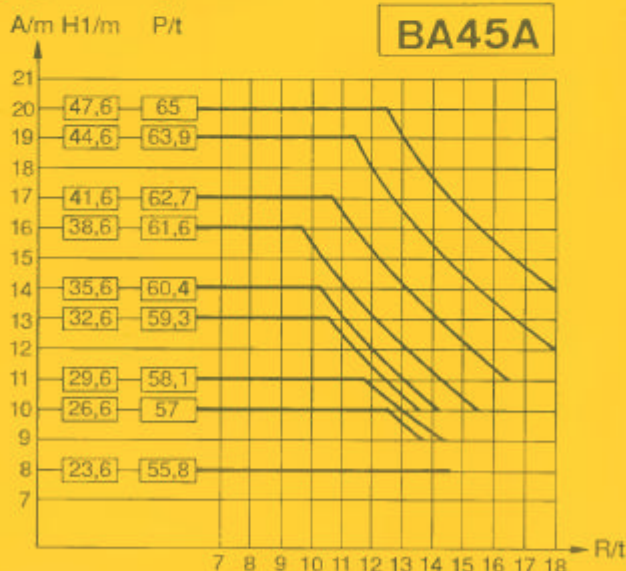
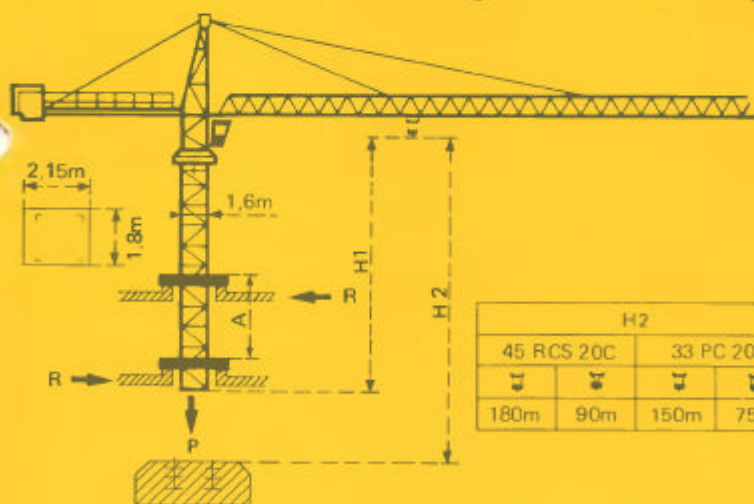
⚖/⚖ Chariot standard 2/4 brins.
(En cas d'utilisation ⚖/⚖ déduire 0,1 t aux charges ⚖/⚖).
⚖ Chariot optionnel 2 brins uniquement.

⚖ Standardlaufkatze 2/4 Stränge.
(Bei Einsatz von ⚖ ist 0,1 t der Lasten von ⚖ abzuziehen).
⚖ Laufkatze in Sonderausführung mit nur 2 Strängen.

⚖/⚖ Standard trolley 2/4 fall.
(When using ⚖/⚖ subtract 0,1 t from the loads ⚖/⚖).
⚖ Optional trolley 2 fall only.

⚖ Carro standard 2/4 ramales.
(En caso de utilización ⚖/⚖ quitar 0,1 t de las cargas ⚖/⚖).
⚖ Carro opcional en 2 ramales solamente.

Télescopage sur dalles - Ketterkrane im Gebäude Climbing crane - Telescopage gruas trepadoras



A Distance entre cadres A Abstand zwischen den Rahmen
H1 Hauteur grue H1 Kranhöhe
P Poids de la grue P Krangewicht
(En service) (In Betrieb)
R Réaction horizontale R Horizontalkräfte

A Distance between collars A Distancia entre marcos
H1 Crane height H1 Altura grúa
P Crane weight P Peso de la grúa
(In service) (En servicio)
R Horizontal reaction R Reacción horizontal

● En service
■ Hors service


















● In Betrieb
■ Ausser Betrieb

⚖ A vide sans lest avec flèche et hauteur maximum.
⚖ Ohne Last und Ballast mit Maximalausleger und Maximalhöhe.

⚖ Without load and ballast with longest jib and maximum height.

● En servicio
■ Fuera de servicio

⚖ Sin cargas, sin lastre con flecha y altura máxima.

				m/min	t		ch-PS hp	kW	
Levage Heben Hoisting Elevación	45 RCS 20 C 	 	0 → 40	4	361 m		45	33	
			0 → 80	2					
		 	0 → 20	8	> 361 m				
			0 → 40	4					
	33 PC 20 C 	 	5.4	4	299 m		33	24	
			30	4					
			60	2					
		 	2.7	8	> 299 m				
			15	8					
			30	4					
	Distribution - <i>Katzfahren</i> Trolleying - <i>Distribución</i>		5 D3 V4	15 30 58				5	3,7
	Orientation - <i>Schwenken</i> Slewing - <i>Orientación</i>		OMD	0 → 0,7 tr/min U/min-rpm				8	5,9
Translation Kranfahren Travelling Traslación	SB 459  R ≥ 10m	RT 324	12,5-25				2 x 7	2 x 5,2	
		TCV 449 ARC H ≤ 33,6 m	10 - 50				4 x 6,8	4 x 5	
	VB 663  R ≥ 13m	RT 443 A1 2V	15 - 30				4 x 5	4 x 3,7	
		TCV 649 ARC H ≤ 43,9 m	10 - 50				4 x 6,8	4 x 5	
Réseau - <i>Netzstrom</i> - Mains supply - <i>Red</i>							380V - 50 HZ		
Puissance électrique nécessaire - <i>Anschlusswert</i> - Necessary electric power - <i>Potencia eléctrica necesaria</i>							RCS : 70 kVA PC : 50KVA		
Groupe électrogène - <i>Stromaggregat</i> - Generator set - <i>Grupo electrogeno</i>							.		

*Nous consulter - *Auf Anfrage* - Consult us - *Consultarnos*

Conforme à la directive CEE 84/534 sur le niveau acoustique - *In compliance with the EEC 84/534 Instruction on noise level*
 Gemäss EWG-Richtlinie 84/534 über Schall-Leistungspegel - *Conforme con la directiva CEE 84/534 sobre el nivel acustico*

NF E52081 - 82

POTAIN

1, rue de Charbonnières, B.P. 173-F 69132 ECULLY Cedex
 Tél. 72.20.20.20 - Télex 330 179 - Télex. Export 375 213 -
 Fax 72 20 20 00

POTAIN GmbH 6082 MÖRFELDEN WALLDORF
 Industriest. 79-87 - Postfach 420
 Tel. 06 105 704.0 - Télex 4.1857 45

TOPKIT G20/15C

Réf. 1989.18 KZH 1